



CALIFORNIA
ACADEMY OF
SCIENCES

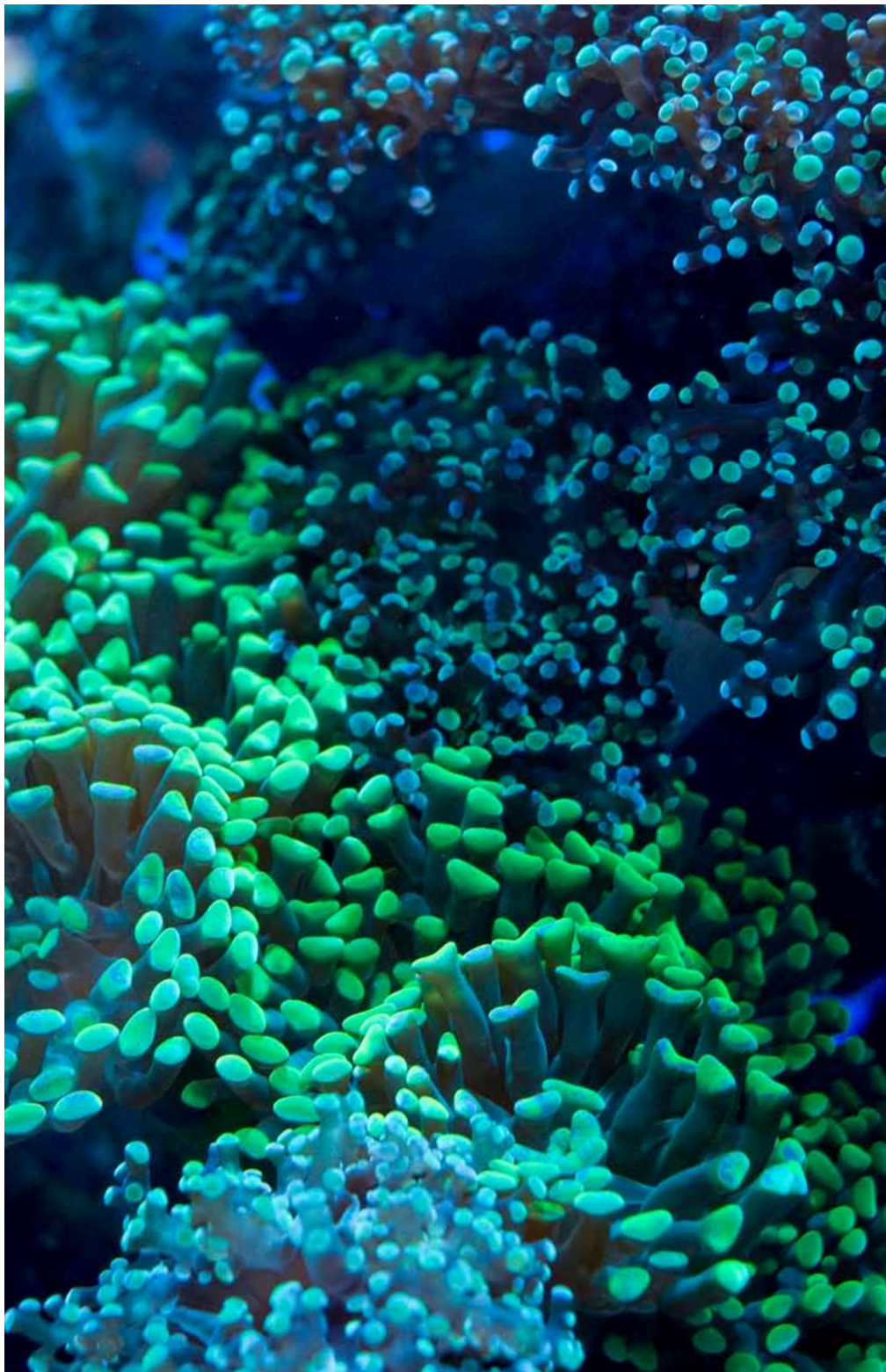
Discover the connection.

Clownfish and anemones can protect each other from predators.



The natural world offers many examples of collaboration that are crucial to our planet's biodiversity. But nature is not the only place such mutually beneficial relationships can be found. As a Corporate Partner of the California Academy of Sciences, you can support this important institution of science and learning while fulfilling your company's philanthropic goals—and enjoying the benefits of partnership. We invite you to discover the connection.

Leafcutter ants harvest leaves to feed a fungus that provides them with food. Photo by Alex Wild.



What does a company like yours have in common with the California Academy of Sciences? More than you might realize. Whatever size your enterprise, and whatever your philanthropic goals, chances are you share the Academy's mission. And as a Corporate Partner, you can also share the unforgettable experiences that define the Academy.

A unique mission

Explore, explain, and protect the natural world: that's what the Academy was designed to do. And because the vitality of our planet affects all our lives and livelihoods, it's a mission your company may value. As a Corporate Partner, you leverage the Academy's power to make a difference—today and in Earth's future.

Community connections

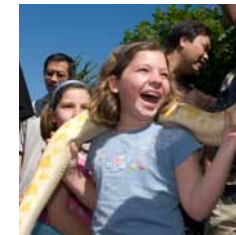
Since September 2008, the California Academy of Sciences has welcomed millions of guests, and thousands more visit every day. They come from across the Bay Area and around the world to experience a stunning example of San Francisco innovation—and Corporate Partners can take pride in every "wow!"

A living, breathing museum

The Academy immerses visitors in a one-of-a-kind living museum. A four-story rainforest with birds and butterflies, the world's deepest living coral reef display, a state-of-the-art planetarium, an African penguin colony—Corporate Partners help make it possible, and enjoy expanded access.

A partner in education

Each year, more than half a million children visit the Academy, often on school field trips that make a vital contribution to their science education and awareness. Cultivating future generations of science-savvy citizens and leaders matters to all of us, and in the Academy, you have an educational partner with real impact.



Lifelong learning programs

From the Living Roof to the Amazon rainforest tunnel, the Academy is a dynamic classroom. Docents make learning personal. Professional development programs reach out to science teachers. Internship programs inspire tomorrow's scientists. And Corporate Partners share the impact.

Contributions to science

Behind the scenes and in biodiversity hotspots around the globe, Academy researchers are making discoveries that deepen our understanding of the natural world. The generosity of Corporate Partners enables us to create science and share it, as Academy researchers publish their work and translate it into eye-opening exhibits.

A commitment to sustainability

The Academy is an architectural gem and a timely example of eco-awareness in action, with LEED Platinum certification. But we don't just model sustainability—we also teach others to recognize their impact on the natural world. Partner with us, and you can help set a "green" example for our community and the world.

An opportunity for your employees

Corporate Partners enjoy the unique privileges of a deeper relationship with the Academy. Complimentary family memberships and guest passes, special events, private tours, and company recognition—opportunities abound for unique experiences. And the deeper your commitment, the closer you get.

Algae thrives inside hammer coral and frogspawn coral, giving the animals energy from the Sun. Photo by Andrew McCormick.



Flowers attract insects and birds that pollinate the native plants on the Academy's Living Roof. Photo by Tim Griffith.

Whatever your company profile, you'll find an opportunity to advance the Academy's mission—and enjoy the benefits of a closer connection. For more information, please contact the Director of Corporate Support at [415-379-5409](tel:415-379-5409) or rschuett@calacademy.org, or visit us online at www.calacademy.org/give/corporate_giving.

At the \$10,000 level your company will receive:

- 60 complimentary guest passes
- 25 complimentary passes to NightLife, the Academy's Thursday night event for guests 21 and up
- Four complimentary Family Plus Memberships to the Academy
- A private tour of the Academy for up to 10 guests
- Company listing and link on the corporate partner page of Academy web site
- Company listing on donor wall
- Company listing in Annual Report
- Invitations to special donor events

At the \$5,000 level your company will receive:

- 30 complimentary guest passes
- Two complimentary Family Plus Memberships to the Academy
- Company listing on donor wall
- Company listing on the corporate partner page of Academy web site
- Company listing in Annual Report
- Invitations to special donor events

At the \$2,500 level your company will receive:

- 15 complimentary guest passes
- One complimentary Family Plus Membership to the Academy
- Company listing on donor wall
- Company listing on the corporate partner page of Academy web site
- Company listing in Annual Report

Corporate sponsorships are also available. The Academy can assist your company with matching the appropriate program or event to meet your goals.

The California Academy of Sciences is a 501(c)3 non-profit institution. Your contribution may be tax deductible. Benefits are valued as follows:

- \$10,000 contribution = \$3,097.00
- \$5,000 contribution = \$1,398.50
- \$2,500 contribution = \$699.25

Benefits are good for one year from date of donation.

“Supporting the Academy enables us to promote discovery and innovation, which are critical to our organization. It's truly a symbiotic relationship.”

Graeme Martin, Ph.D.

President & CEO, Takeda Research Investment Inc.

California Academy of Sciences
Golden Gate Park
55 Music Concourse Drive
San Francisco, CA 94118

415-379-5409
www.calacademy.org

If respect for the natural world is a value your company shares, discover your connection to the California Academy of Sciences. As a Corporate Partner, you can advance **biodiversity research**, support **science education**, and model **sustainability** while sharing the most amazing “green” museum on the planet.

